



Light Module Bruco

Studio Natural

colors



Typology	Floor
Utilisation	External

230V 2.1 W 207 lm



direct light

Outdoor lamp, diffused light, componible, aluminium die casting.

The BRUCO lamp can be composed of 1 lamp body (element A code 40213). The body lamp can be mounted directly on the base (element C code 40061) or fixed on a pole, available in three heights (element E code 40063 H 33 cm or code 40064 H 47 cm or code 40181 H 138,5 cm) to be fixed to the ground. Integrated LED light source.

Elements for the lamp composition:

code 40213 BODY LAMP H 8 cm Ø 6,5 cm 2,1 W 2700 K

code 40060 TOP Ø 6,5 cm

code 40061 BASE Ø 13 cm

code 40062 JOINT Ø 6,5 cm

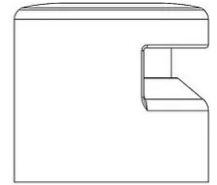
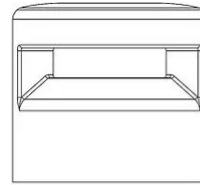
code 40063 POLE H 33 cm Ø 6,5 cm

code 40064 POLE H 47 cm Ø 6,5 cm

code 40181 POLE H 138,5 cm Ø 6,5 cm

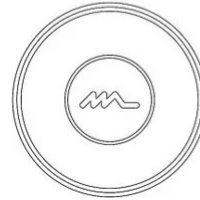


Family Light module Bruco
 Typology Floor
 Utilisation External



Dimensions

Height 8 cm
 Diameter 6,5 cm



Materials

Structure aluminium Diffuser polycarbonate

Voltage	230V	Watt	2.1 W
Power unit	Included	Lumen	207 lm
Mounting Power Supply	Internal	CRI	>90
Power supply	Electronic power supply	Duration	50000 h
Non dimmable		CCT	2700 K
		Energy class	

Certifications



EcoLabel



Colour variant code



40213/AN



Anthracite



40213/CO



Corten