



# Colibrì

T

Emiliana Martinelli

colors



Typology Wall  
Utilisation Indoor

230V 10 W 1300 lm



direct light



indirect light

Direct/indirect light adjustable wall lamp. Painted aluminium structure. Diffuser is printed with polycarbonate. LED light source integrated. Electronic driver inside the base.

Award

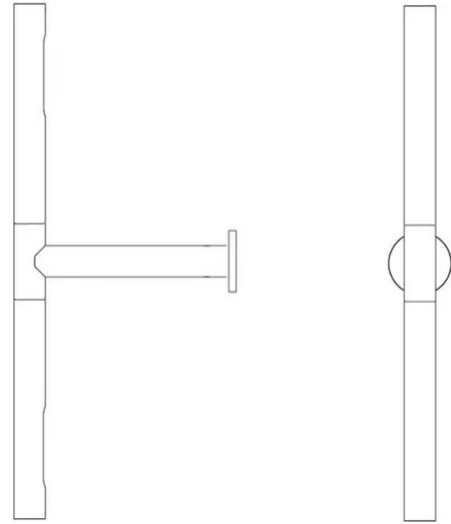




Family	Colibri
Typology	Wall
Utilisation	Indoor

### Dimensions

Larghezza	41 cm
Profondità	18 cm
Diameter	2,5 - 12 (base) cm
Power supply cable length	0 cm
Weight	0.8 Kg



### Materials

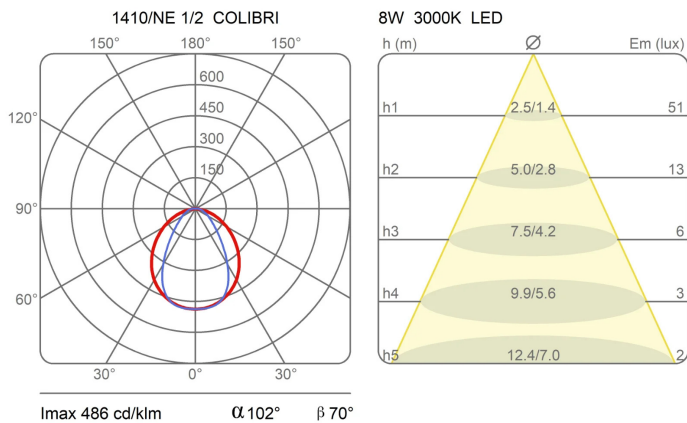
Structure	aluminium	Diffuser	polycarbonate
Base	aluminium		

Voltage	230V	Watt	10 W
Power unit	Included	Lumen	1300 lm
Mounting Power Supply	Indoor	CRI	>80
Power supply	Electronic power supply	Duration	50000 h
Non dimmable		CCT	3000 K
		Energy class	F

### Certifications



### Photometric curves





Colour variant code



1410/B/NE

1410/B/AU



Pearl Gold



Black

Gallery

